

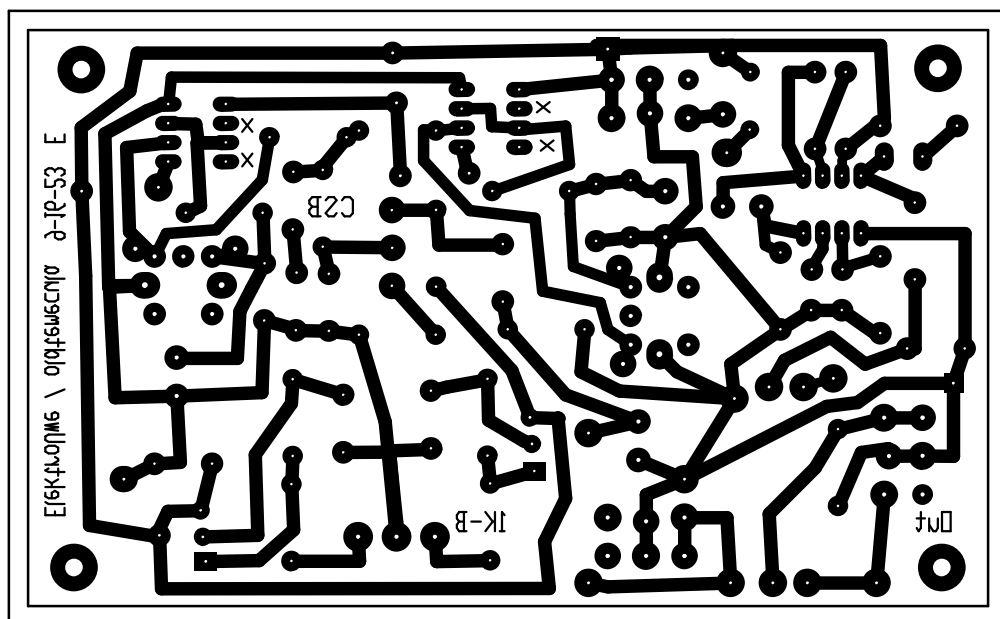
Phoenix 5053 Volume Control By oldtemcula

This line reads backward on the silkscreen sheet & normal on the bottom sheet.

Drill Bits = 0.033" - 0.0462" 0.032" - 0.187"

3" x 2" or 76mm x 157mm

Center your board within the oversized outline



20230916 09:12:00 ni 0d 12um 09972222

Bottom Silkscreen

Saturday, September 16, 2023